

Child Nutrition Labels and Product Formulation Requirements

A Child Nutrition (CN) label or a Product Formulation Statement (PFS) provide meal pattern contribution information for commercially prepared, combination food items. CN labels are available only for main dish entrees that contribute to the meat/meat alternate component of the meal pattern. Some commercially prepared, combination foods may not have a CN label. This is because the CN labeling is a voluntary program. If a commercially prepared, combination food item does not have a CN label, contact the manufacturer for a PFS. If a food item does not have a CN label or PFS, the food item will not be creditable in Child Nutrition Programs. Read on to understand how this crediting information should appear on CN labels, how to keep documentation of CN labeled food items, what is a CN label with a watermark and Product Formulation Statements as required for Child Nutrition Programs of the U.S. Department of Agriculture (USDA).

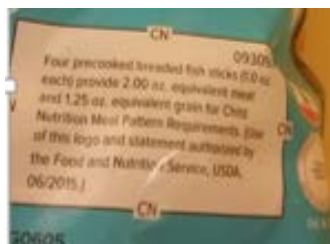
The CN Label will always contain the:

- CN logo which is a distinct border.
- Meal pattern contribution statement.
- Six-digit product identification number.
- USDA authorization.
- Month and year of approval.

How to Document a CN Label:



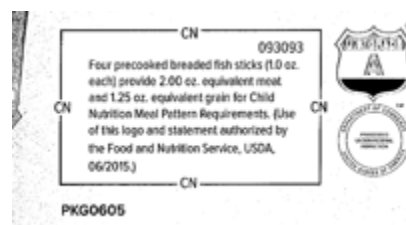
There are three options for keeping documentation of CN labeled food items. CN Labels that are photographed or photocopied must be visible and legible.



Photograph of the CN label attached to the product packaging.



CN label cut out from the product packaging.



Photocopy of the CN label removed from the product package.

CN Label with a Watermark and Invoice

A CN label with a watermark includes the disclaimer “Copy Not for Documenting Federal Meal Requirements” and may be printed from a manufacturer’s website or provided by the manufacturer during the bidding process. This is acceptable documentation of crediting information only when an invoice is attached showing purchase of the product.

Bill of Lading (Invoice)		
Shipped To: <input type="text"/>		
Address Line 1: <input type="text"/>		
City, State, Zip Code: <input type="text"/>		
Country: <input type="text"/>		
Phone Number: <input type="text"/>		
Shipping Organization Information		
Description	QTY.	Unit
Chicken Stir Fry Bowl		



Brakebush Brothers, Inc.
N4993 6th Drive, Westfield, WI 53964-9511
Corporate Office 800-933-2121
www.brakebush.com

Product Formulation Statement (Product Analysis) for Meat/Meat Alternate (M/MA) Products

Child Nutrition Program operators should include a copy of the label from the purchased product carton in addition to the following information on letterhead signed by an official company representative.

Product Code: 3541
 Product Name: Smart Shapes® Gold'n' Spice® Fully Cooked Breaded Chicken Breast Strips
 Portion Size: 4 pieces
 Portion Weight: 4.400 oz

I. Meat/Meat Alternate

Please fill out the chart below to determine the creditable amount of Meat/Meat Alternate

Description of Creditable Ingredients per Food Buying	Ounces per Raw Portion of Creditable Ingredient	Multiply	FBG Yield/ Servings Per Unit	Creditable Amount *
Chicken, boneless, fresh or frozen	3.0078	X	0.70	2.105
		X		0.000
A. Total Creditable M/MA Amount*				2.105

*Creditable Amount - Multiply ounces per raw portion of creditable ingredient by the FBG Yield Information.

II. Alternate Protein Product (APP)

If the product contains APP, please fill out the chart below to determine the creditable amount of APP. If APP is used, you must provide documentation as described in Attachment A for each APP used.

Description of APP, manufacturer's name, and code number	Ounces Dry APP Per Portion	Multiply	% of Protein As-is*	Divide by 18**	Creditable Amount APP***
		X		= by 18	0.000
		X		= by 18	0.000
B. Total Creditable APP Amount*					0.000
C. TOTAL CREDITABLE AMOUNT (A + B rounded down to nearest 1/4 oz)					2.105

*Percent of Protein As-is is provided on the attached APP documentation.

**18 is the percent of protein when fully hydrated.

***Creditable amount of APP equals ounces of Dry APP multiplied by the percent of protein as-is divided by 18.

Total Creditable Amount must be rounded down to the nearest 0.25oz (1.48 would round down to 1.25 oz meat equivalent). Do not round up. If you are crediting M/MA and APP, you do not need to round down in box A (Total Creditable M/MA Amount) until after you have added the Total Creditable APP Amount from box B to box C.

Total weight (per portion) of product as purchased: 4.400 oz <----- Serving
 Total creditable amount of product (per portion): 2.000 oz <----- M/MA
 (Reminder: Total creditable amount cannot count for more than the total weight of product.)

I certify that the above information is true and correct and that a serving of the above product (ready for serving) contains the above-listed equivalent meat/meat alternate when prepared according to directions.

I further certify that any APP used in the product conforms to the Food and Nutrition Service Regulations (7 CFR Parts 210, 220, 225, 226, Appendix A) as demonstrated by the attached supplier documentation.

Signature: Printed Name, Title, and Phone Number: Jon Brakebush, Vice President - Research & Development, 800-298-2121 Date: 7/18/2013

Product Formulation Statement (PFS)

A Product Formulation Statement (PFS) provides crediting information for processed products that do not have a CN Label. A PFS always contains:

- Manufacturer’s letterhead.
- Name of product and product code number.
- Math calculations showing how the manufacturer determined the meal pattern contribution.
- Crediting statement.
- Signed and dated by an official of the manufacturer.

To determine if a product has a PFS, contact the manufacturer. The product packaging will contain the telephone number or mailing address. Explain that you need the child nutrition information for the commercially prepared product. They may ask for the Universal Product Code (UPC) number so have this information available as well.

Resources

- [Tip Sheet for Accepting Processed Product Documentation](#)
- [Tips for Evaluating a Manufacturer’s Product Formulation Statement](#)